

DEVELOPING COMMUNITY-BASED EXTENSION TEAMS

AN EVOLVING INTEGRATIVE APPROACH TO SUSTAINABLE LOCAL EXTENSION SYSTEMS

ALEXANDER U. TABBADA

World Agroforestry Centre (ICRAF-Philippines)

UDP-ICRAF Project Team Leader

Some realities in the uplands...

- Difficult to reach due to the terrain & road conditions
- Limited development projects & services (i.e., agricultural extension)
- Services, resources and external support are often independent of each other or not coordinated

Some solutions...

- Develop sustainable community institutions to harness local capacities and resources for participatory development
- Open alternative two-way avenues for development interventions involving external institutions

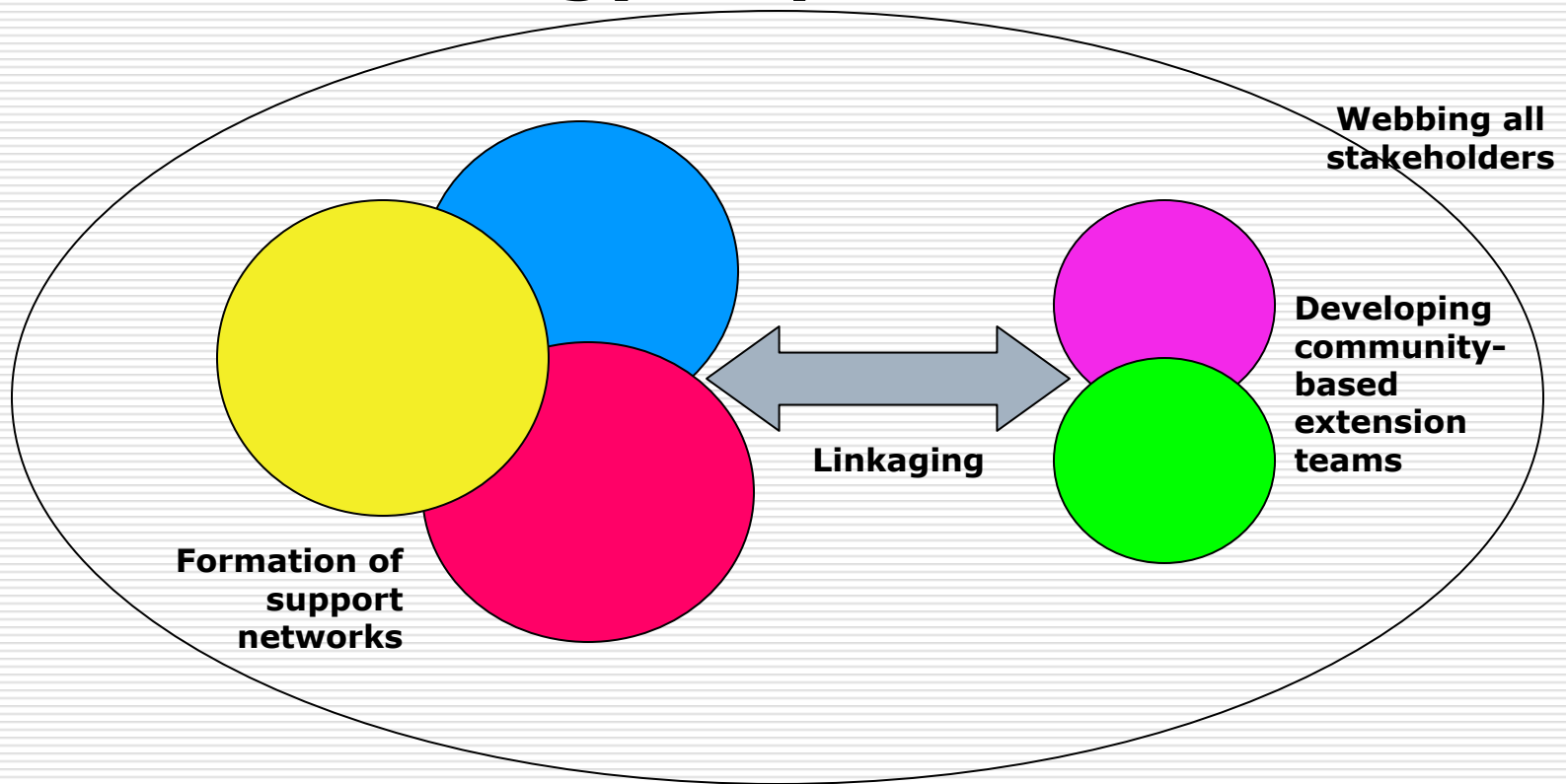
The strategy...

The UDP-ICRAF collaborative project on
**“Enhancing the upland extension
system in Southern Mindanao”**
(2004 – 2007)



How to enhance?

The UDP strategy/experience:



Milestones...

| | 1999 | 2000 | 2001 | 2002 | 2003 | 2004 | 2005 | 2006 |
|---------------------|-----------------------------|--------------------------------|---|---|---|--|--|--|
| Significance | Start of counter-parting | Enhanced mobility (& capacity) | Towards increase in tree cover, erosion control & food security | Farmer-to-farmer extn Promotion of integration | Increasing access to extn Alternative to mono-cropping Guide to macro land use planning | Increasing further access to extn "Learning" & "Earning" Guide to micro land use planning Towards sustaining CBOs & initiatives | Extn as an essential element Teamwork & connectivity Showcasing convergence, UDP & marketing CBET Show of confidence to local extn Network at work | Sustainability systems at work |
| | 1999 | 2000 | 2001 | 2002 | 2003 | 2004 | 2005 | 2006 |
| | Start of UDP (6 components) | ATs | Conservation farming (AF, IFS, SWC) | Model Farms | LUB BDP DFS BEWs | RRDENs STOP Learning Sites FTGs | Policy advocacy TOT MEPs LGU-BEWs Field Days CBETs SUD Model | Nat'l SUD policy Replication/adoption/integration |

Extension Knowledge Products...

| | 1999 | 2000 | 2001 | 2002 | 2003 | 2004 | 2005 | 2006 |
|------------------------------------|------|------------|--------------------------------|-------------|-------------|-----------------------|-----------------|----------------------------------|
| Start of UDP (6 components) | | ATs | CF technologies (AF, IFS, SWC) | Model Farms | DFS | Learning Sites | CBETs | Replication/adoption/integration |
| | | | | | BEWs | FTGs | SUD Model | |
| | | | | | LUB BDP | RRDENS | MEPs | |
| | | | | | | STOP | Field Days | Nat'l SUD policy |
| | | | | | | | Policy advocacy | |
| | | | | | | | TOT | |

| | 1999 | 2000 | 2001 | 2002 | 2003 | 2004 | 2005 | 2006 |
|-----------------|------|-----------|-------------|----------------------|------------------------------------|--|--|--|
| Products | | CO manual | Flip charts | IFS/DFS technoguides | Intensive CB module, IEC materials | LS & FTG guidelines, FTG primer, STOP manual | Training manual on Ag Extn & Land Mgt, STOP manual | <i>Manuals on CBETs, LS, Field Days & Managing Local Extn; IEC materials</i> |

CBET...

The members:

1. Agricultural Technician (AT) - *municipal*
2. Barangay Extension Worker (BEW) - *barangay*
3. Farmers Training Group (FTG) - *sitio*

Leader: **Technician**

Advisers: **Mun. Agriculturist & Brgy. Captain**

CBET...

Main Functions:

1. Dissemination of appropriate farming & NRM practices
2. Accessing support for extension and development initiatives

CBET...

Activities:

1. Assisting farmers in planning & establishing DFS
2. Planning & implementing hands-on trainings, cross visits and Field Days
3. Bulking/production of materials for dispersal

CBET...

Activities:

4. Developing, testing & evaluating new technologies & extension strategies
5. Group income generating projects
6. Monitoring & reporting

CBET...

Strengths:

- Integrates local & external knowledge & other resources
- Develops the value & culture of “teamwork”
- A strategy for an **accessible, effective, responsive & responsible** extension service at the community level

CBET...

Weaknesses/Limitations:

- Dependent on the availability of farmer-volunteers
- Uncertainty of LGU Technician's time for Team activities (other responsibilities/ assignments & lack of security of tenure)

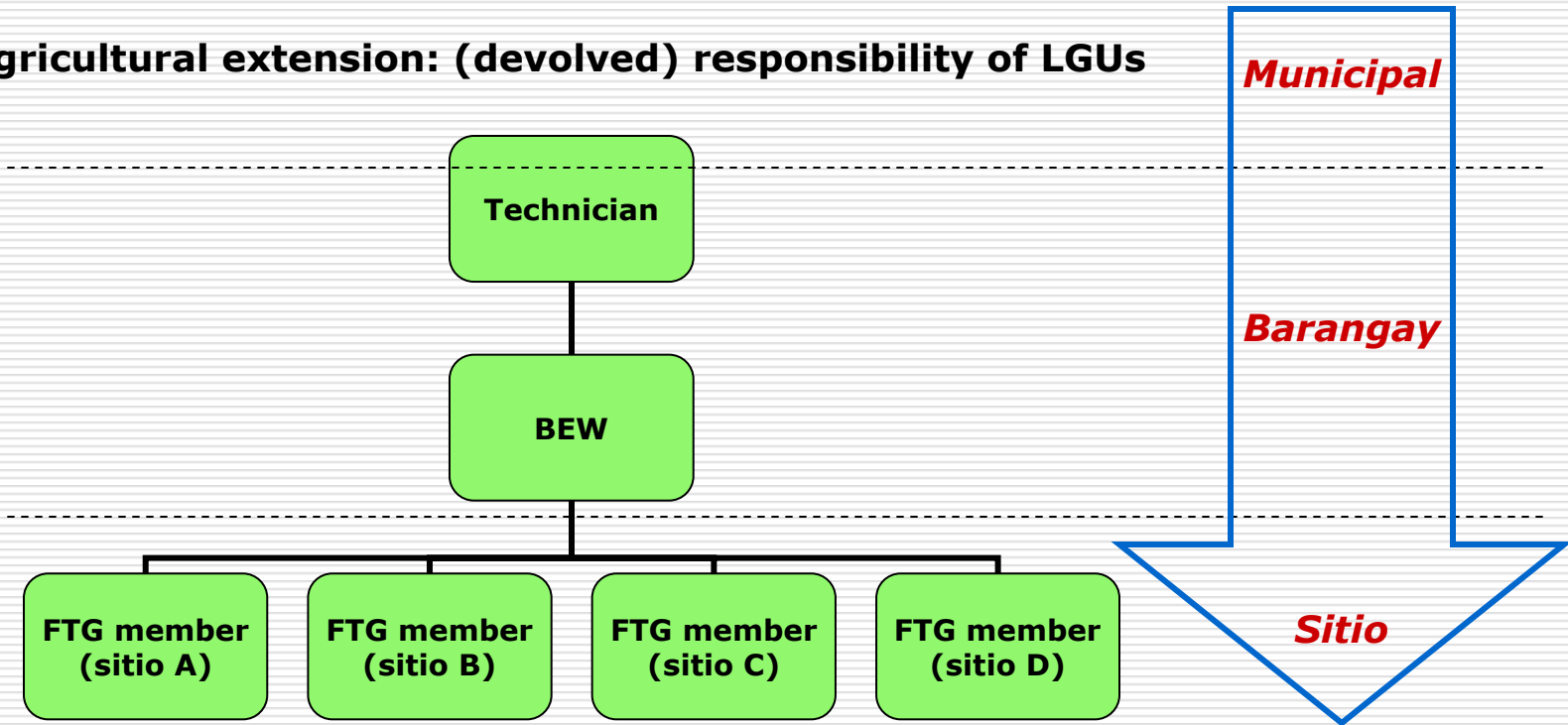
CBET...

Incentives (particularly for BEWs & FTGs): *(towards sustainability)*

1. Additional knowledge & enhanced skills
(through Capacity Building programmes)
2. Involvement in community affairs
3. Recognition of services
4. Livelihood/income-generating projects
5. Show of support from LGUs

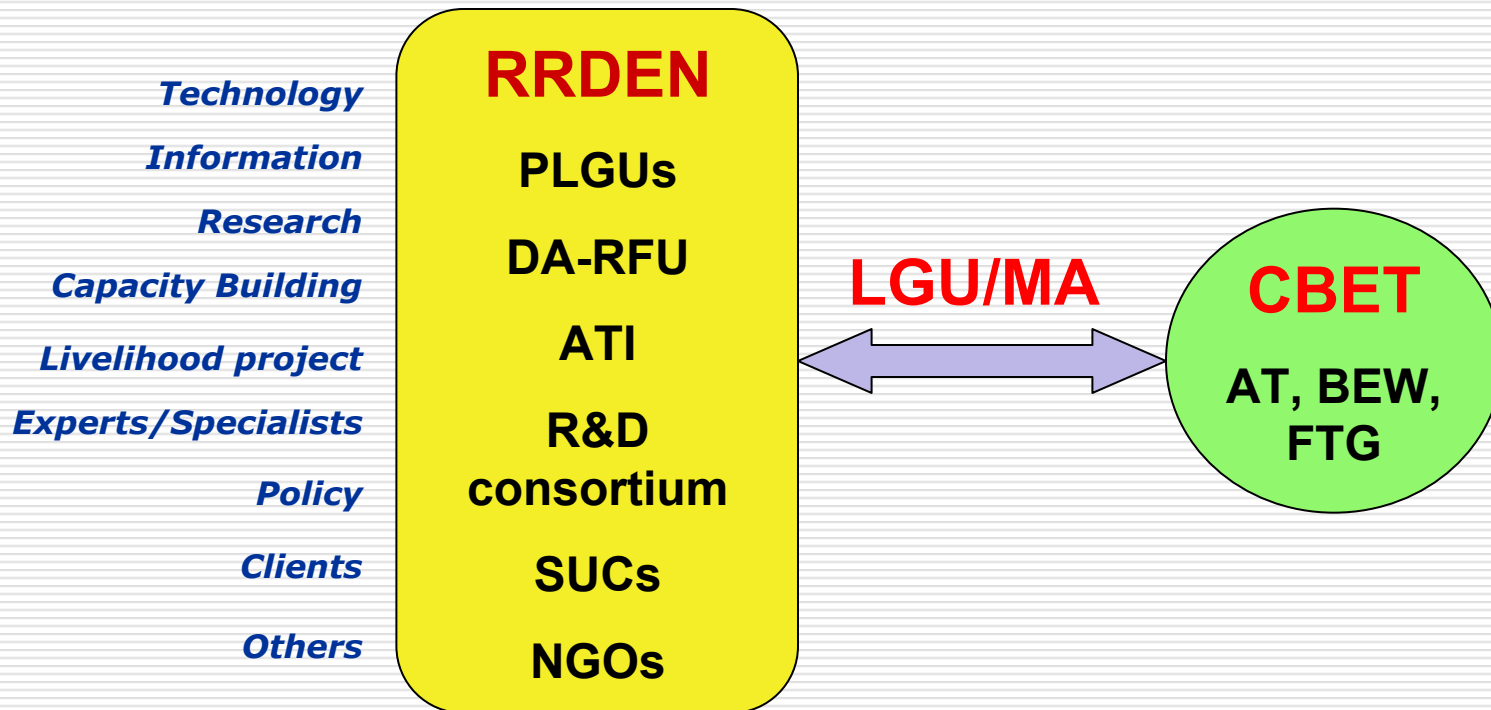
CBET...

Agricultural extension: (devolved) responsibility of LGUs



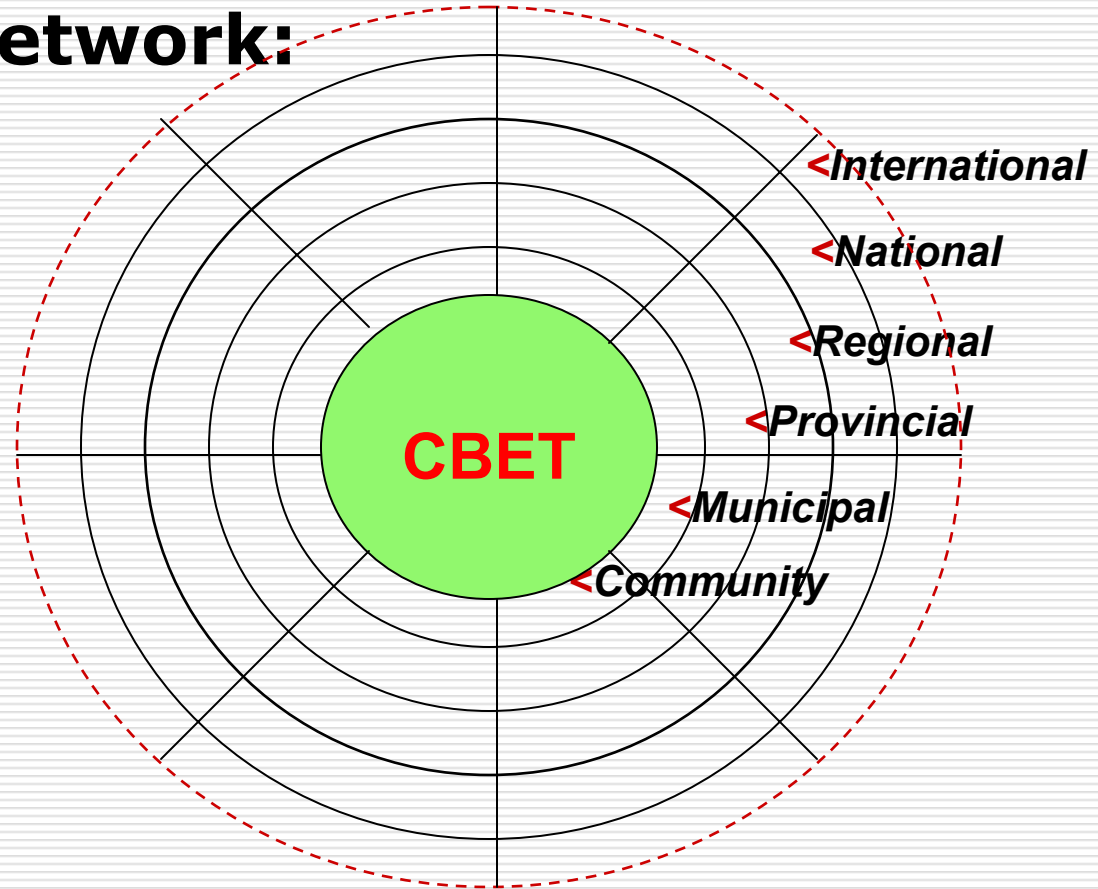
CBET...

In a larger environment:



CBET...

In a larger network:



CBET...

As of 30 April 2006:

- 142 CBETs
- 326 Learning Sites/Model Farms (294, mainly by LGUs)



CBET...

As of 30 April 2006:

- 9 Field Days conducted



CBET potentials in other areas...

Pre-conditions:

1. Peoples Organisation/Community-Based Organisation with members who are willing to volunteer as farmer-extension workers
2. MLGU agricultural extension program
3. Basket of appropriate technologies (or options)
4. Agricultural support programs (external to the MLGU)

CBET potentials in other areas...

Already available:

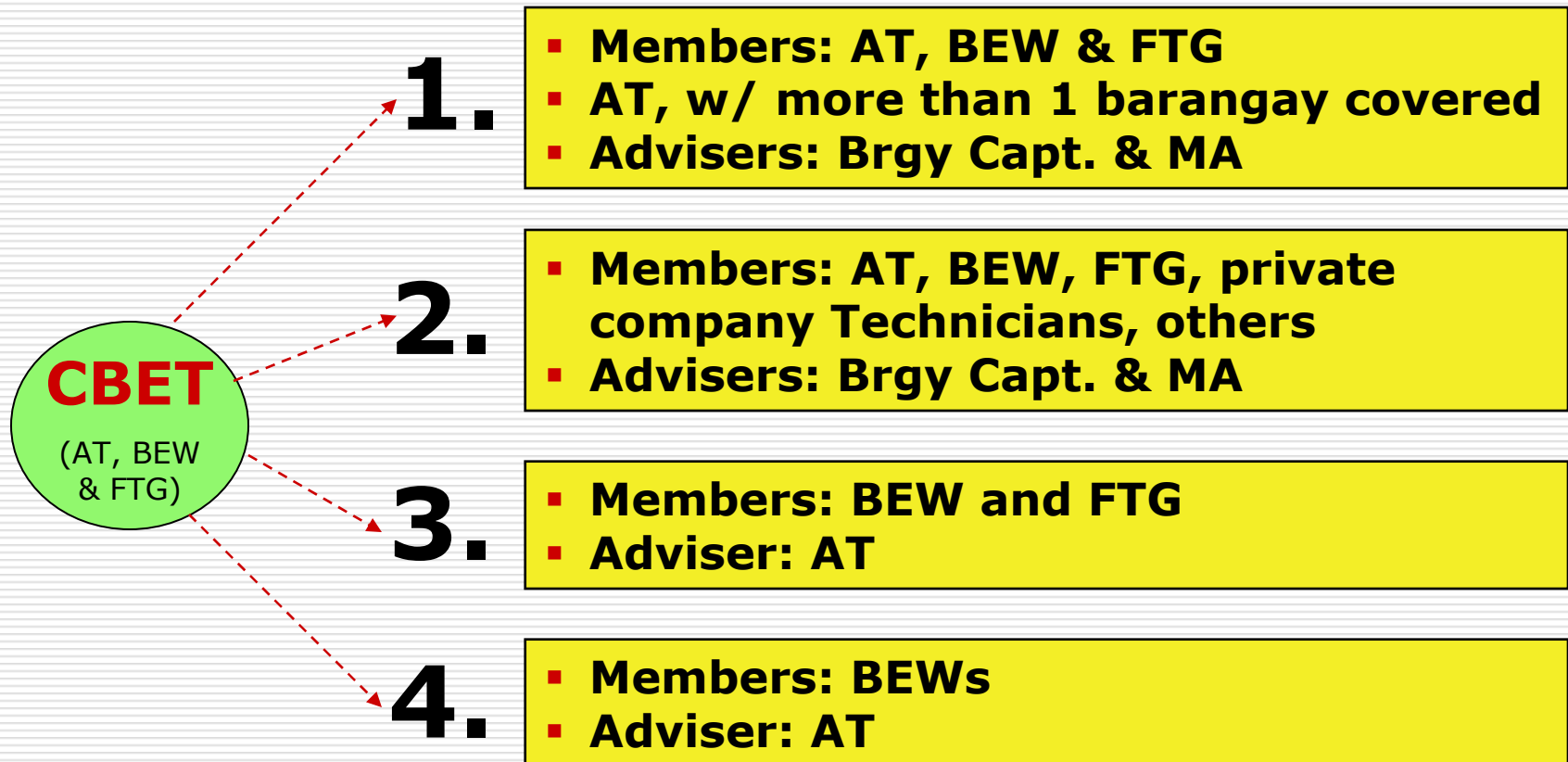
1. CBETs (with Learning Sites) - models
2. Land use based barangay development planning methodology
3. Guides/tools in planning for DFS in uplands (i.e., STOP)

CBET potentials in other areas...

Already available:

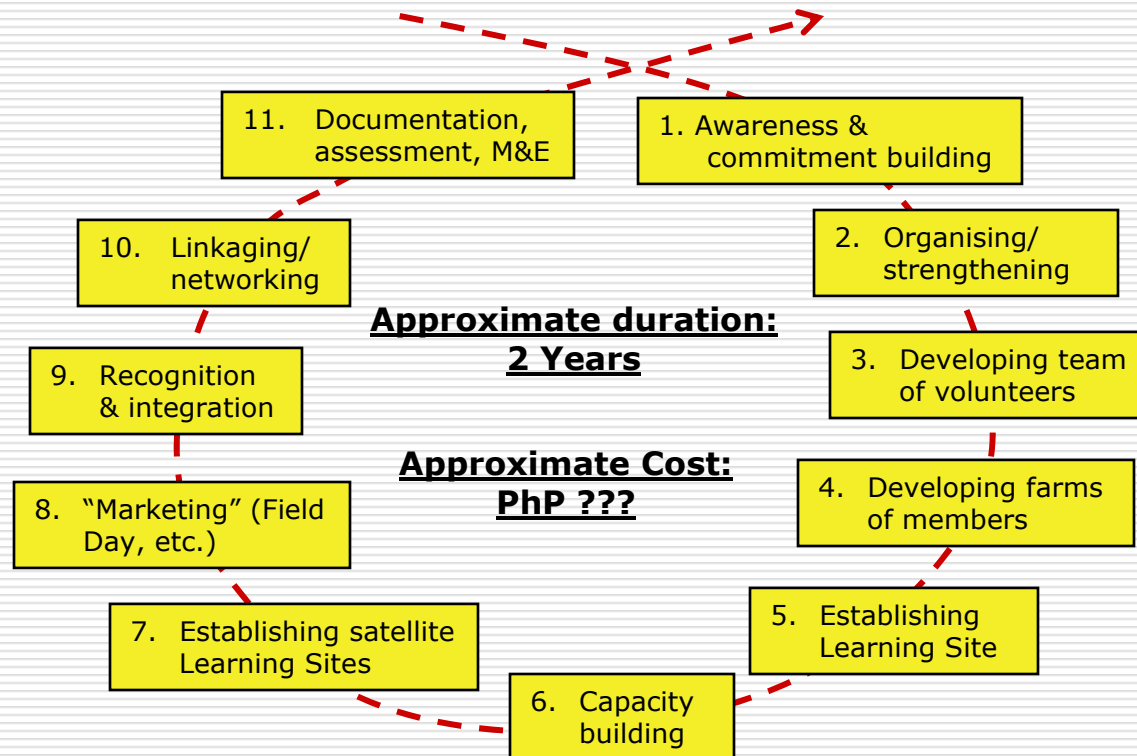
4. Farming technologies and systems that balance production and conservation
5. Regional & provincial trainers
6. Training modules on agricultural extension & land management

CBET: Some possible variants...



Developing CBETs (by LGU)...

The proposed process:



Looking ahead...

In UDP-covered areas in 2006:

- 1 FTG member & 1 Satellite Learning Site in each sitio covered by the Programme (144 barangays & 500 sitios)
- CBETs doing more extension works & engaging in income generating projects
- CBETs linked to bigger local extension networks, to the RRDEN & other institutions (including clients)

Looking ahead...

In non-covered areas in 2006-onward:

- LGUs forming their own CBETs
- LGUs making some innovations in CBETs

In all areas, in 2006-onward:

- Networking of CBETs
- CBETs, well supported

The X-tra Challenge...

How to...

- Sustain volunteerism of BEWs & FTGs
- Sustain commitment of ATs
- Enhance & sustain teamwork; prevent dependence
- Enhance coordination & complementation among various levels of local governance



The X-tra Challenge...

How to...

- Link farming communities with markets
- Muster and sustain multisectoral support to CBETs and Learning Sites in promoting DFS as alternative to plantations & monocropping
- Institutionalise CBETs as an approach to sustainable local extension systems



Lastly...

Tnk U 4 listening. Ur
questions, clarifications,
comments & suggestions
will B most welcome!